

## Infographics

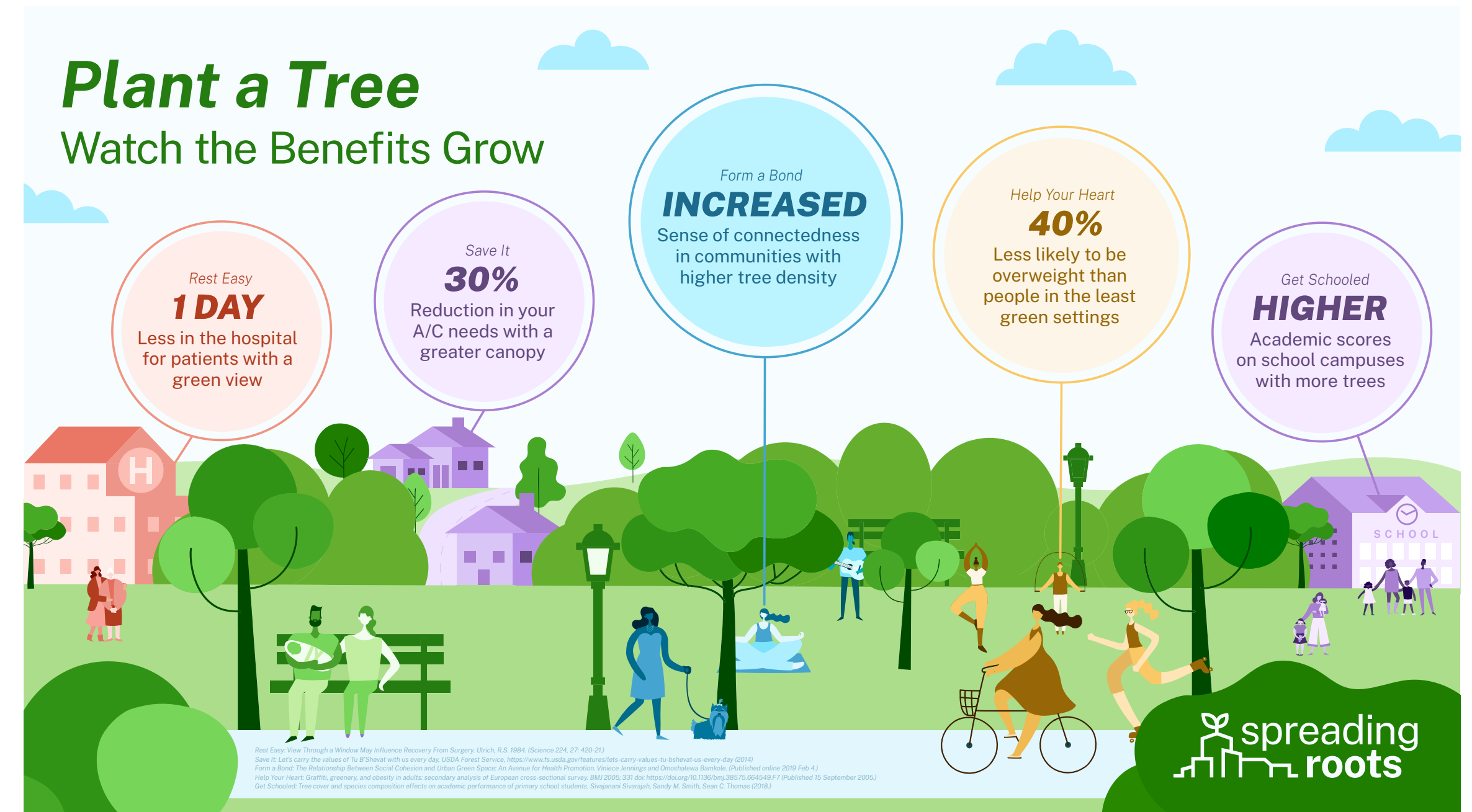
Infographics are visual representations of data and information that make complex concepts more accessible and engaging to a broad audience.

For this initiative, we developed many pre-populated graphics, along with versions you can use to populate stats and graphics relevant to your initiatives. They communicate the benefits of trees and community gardens, which trees are best suited to your area, how green spaces can inspire community, and where to find helpful tools to assist you in your tree planting efforts.

You can use information from throughout the fact sheets and information sheets to populate templates or use the templates to create your own to match your specific initiatives. You can view and download these examples as well as others we have created on our website at [spreadingroots.org](http://spreadingroots.org).



# Infographics




# Infographics

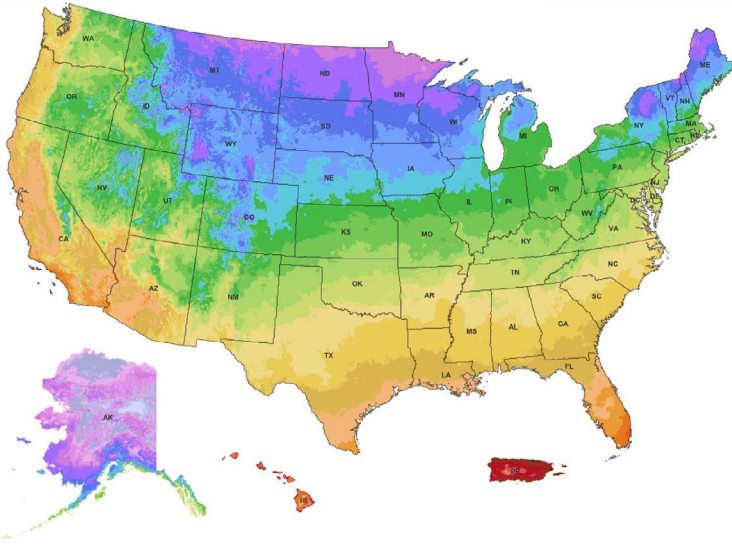
## Throwing Shade

These trees are great for urban conditions that typically involve more compact, drier soil. But, to find the tree that's just right for your specific conditions, be sure to check a trusted resource like the *Arbor Day Foundation Tree Wizard*.

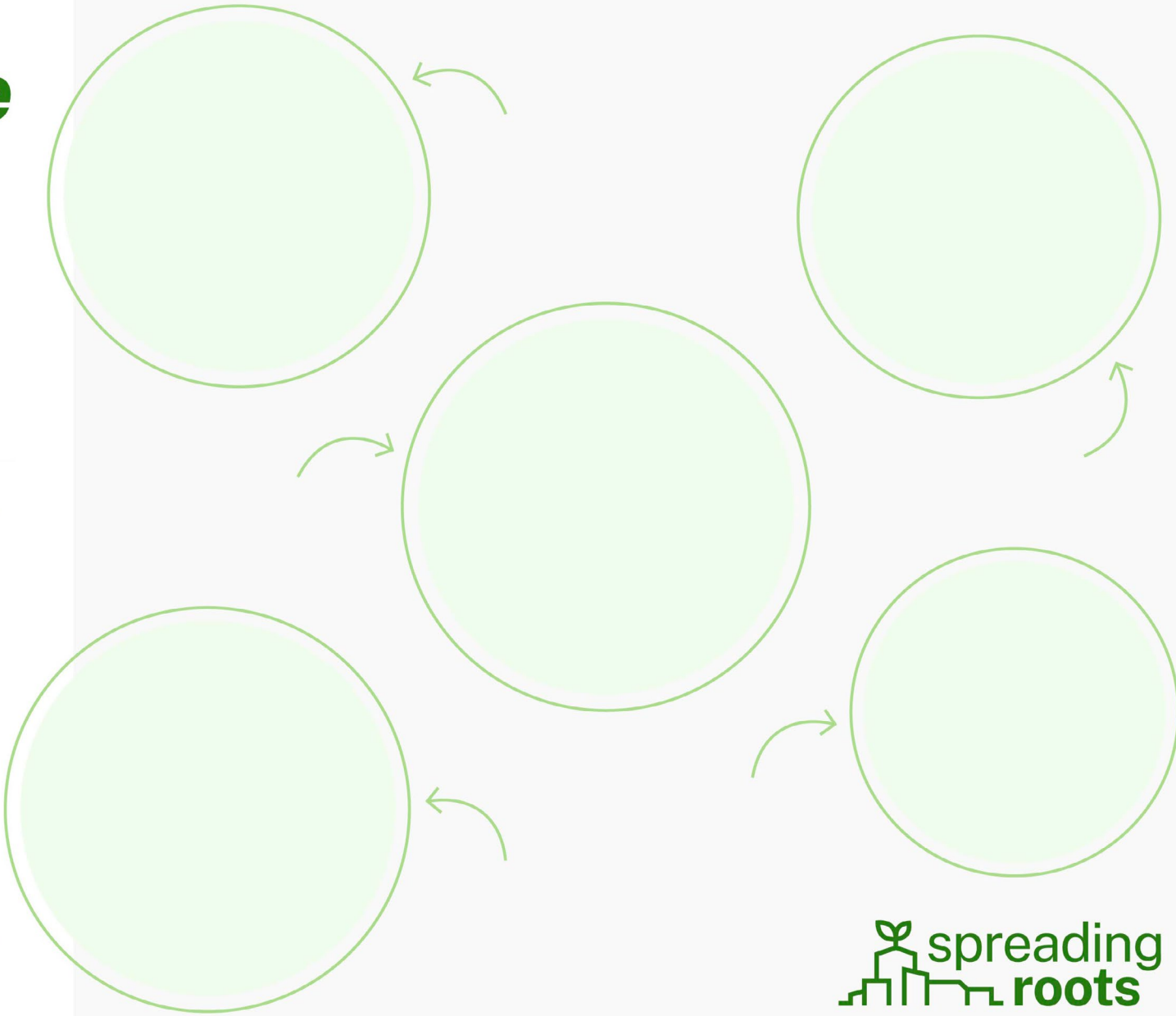

Use the U.S. gardeners and growers standard based on the average yearly winter temperature to determine which plants are most likely to grow and thrive in your area.



Answer a few quick questions. Find the right tree for you.




Hardiness Zone Map Source: [planthardiness.ars.usda.gov](http://planthardiness.ars.usda.gov)

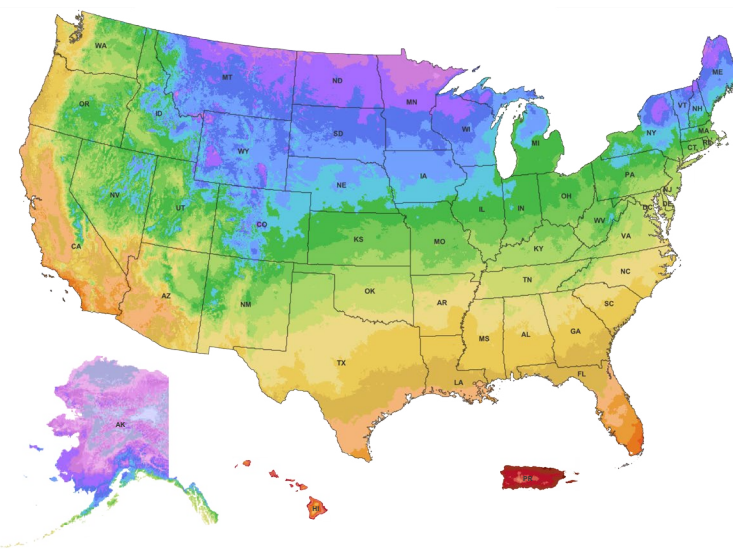
## Throwing Shade

These trees are great for urban conditions that typically involve more compact, drier soil. But, to find the tree that's just right for your specific conditions, be sure to check a trusted resource like the *Arbor Day Foundation Tree Wizard*.


Use the U.S. gardeners and growers standard based on the average yearly winter temperature to determine which plants are most likely to grow and thrive in your area.




Answer a few quick questions. Find the right tree for you.




Hardiness Zone Map Source: [planthardiness.ars.usda.gov](http://planthardiness.ars.usda.gov)




**Silver Linden**  
Zones 4a-7b  
Nonnative, adaptable, drought tolerant, moderate growth rate




**London Planetree**  
Zones 6a-9b  
Leafy, robust, hardy, pollution tolerant, fast growing




**Crape Myrtle**  
Zones 6a-10b  
Summer blooms, sun lovers, tough, durable, simple to grow



**Black Olive**  
Zones 10b-11b  
Saline tolerant, wind resistant, flowering, dense canopy



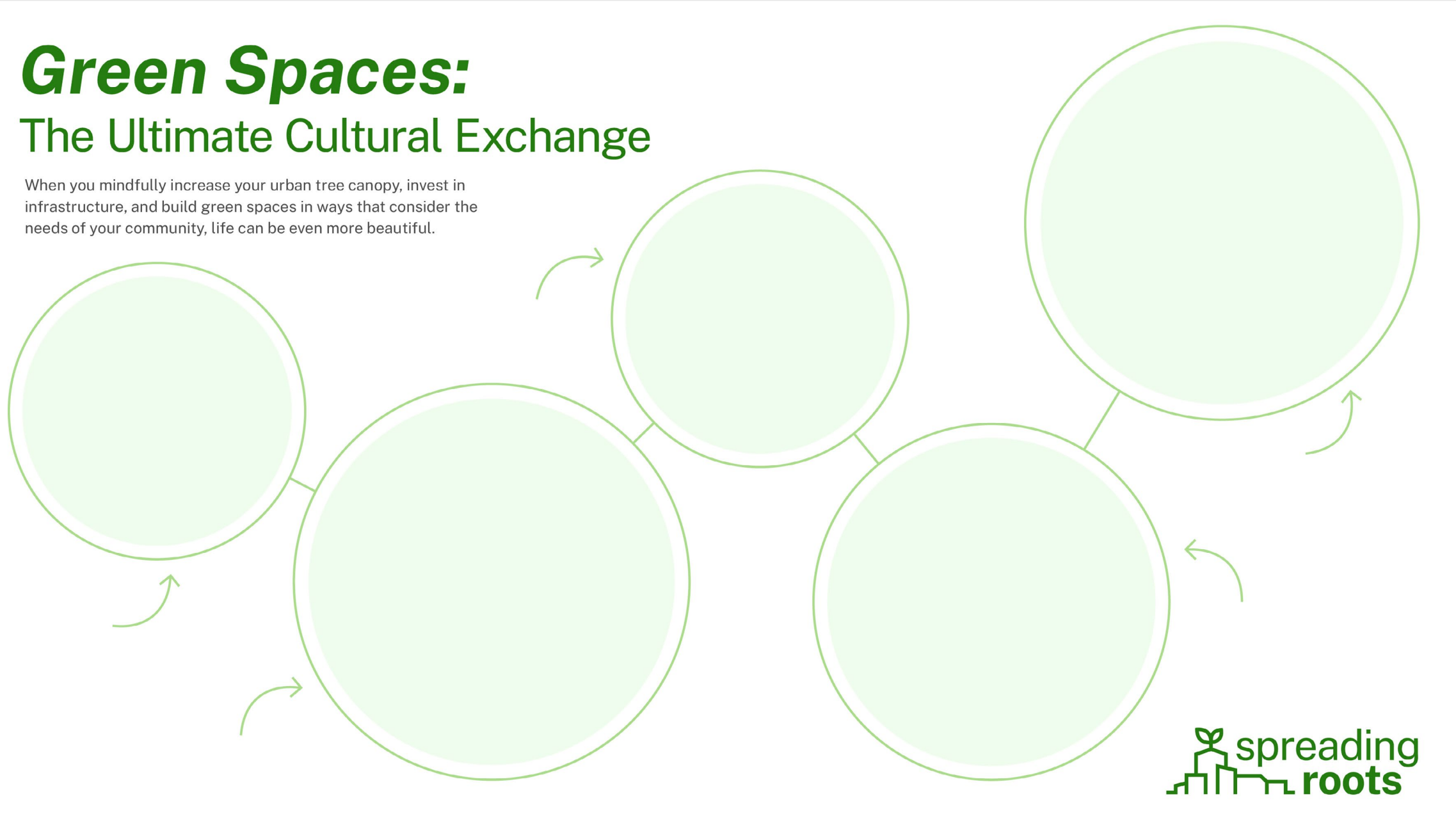
**Eastern Red Cedar**  
Zones 2a-9b  
Heat-tolerant evergreen, low maintenance, bears food for wildlife



# Infographics

## Green Spaces: The Ultimate Cultural Exchange

When you mindfully increase your urban tree canopy, invest in infrastructure, and build green spaces in ways that consider the needs of your community, life can be even more beautiful.



## Green Spaces: The Ultimate Cultural Exchange

When you mindfully increase your urban tree canopy, invest in infrastructure, and build green spaces in ways that consider the needs of your community, life can be even more beautiful.



# Infographics

## Before You Grow...

Remember: Planting trees is a great thing, but before you dig, you should always determine what benefits you want and where trees are most needed. For guidance, check out these helpful tools. With proper guidance, you can plant the right tree in the right place that can do the most good for your community.



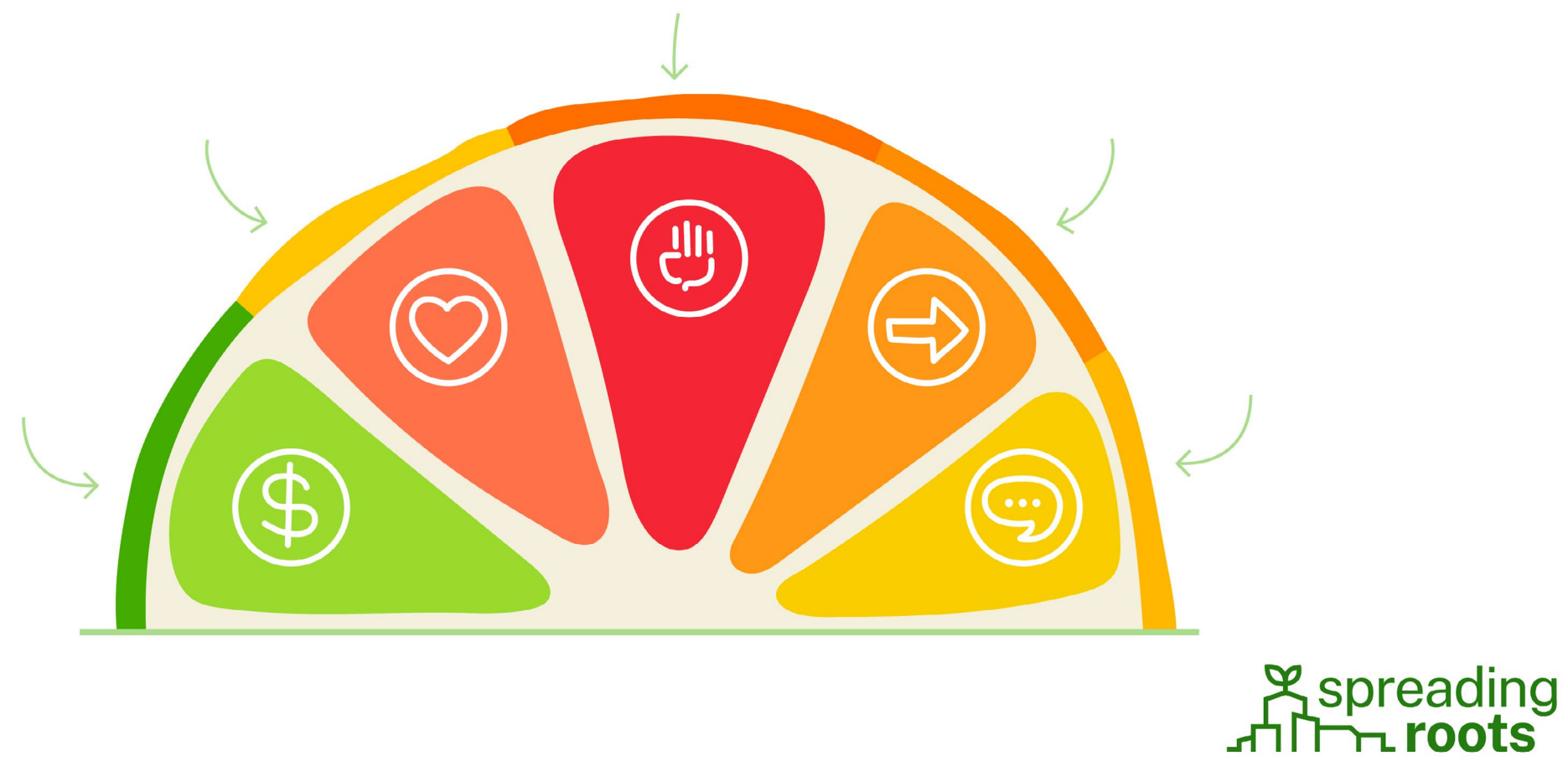
## Before You Grow...

Remember: Planting trees is a great thing, but before you dig, you should always determine what benefits you want and where trees are most needed. For guidance, check out these helpful tools. With proper guidance, you can plant the right tree in the right place that can do the most good for your community.

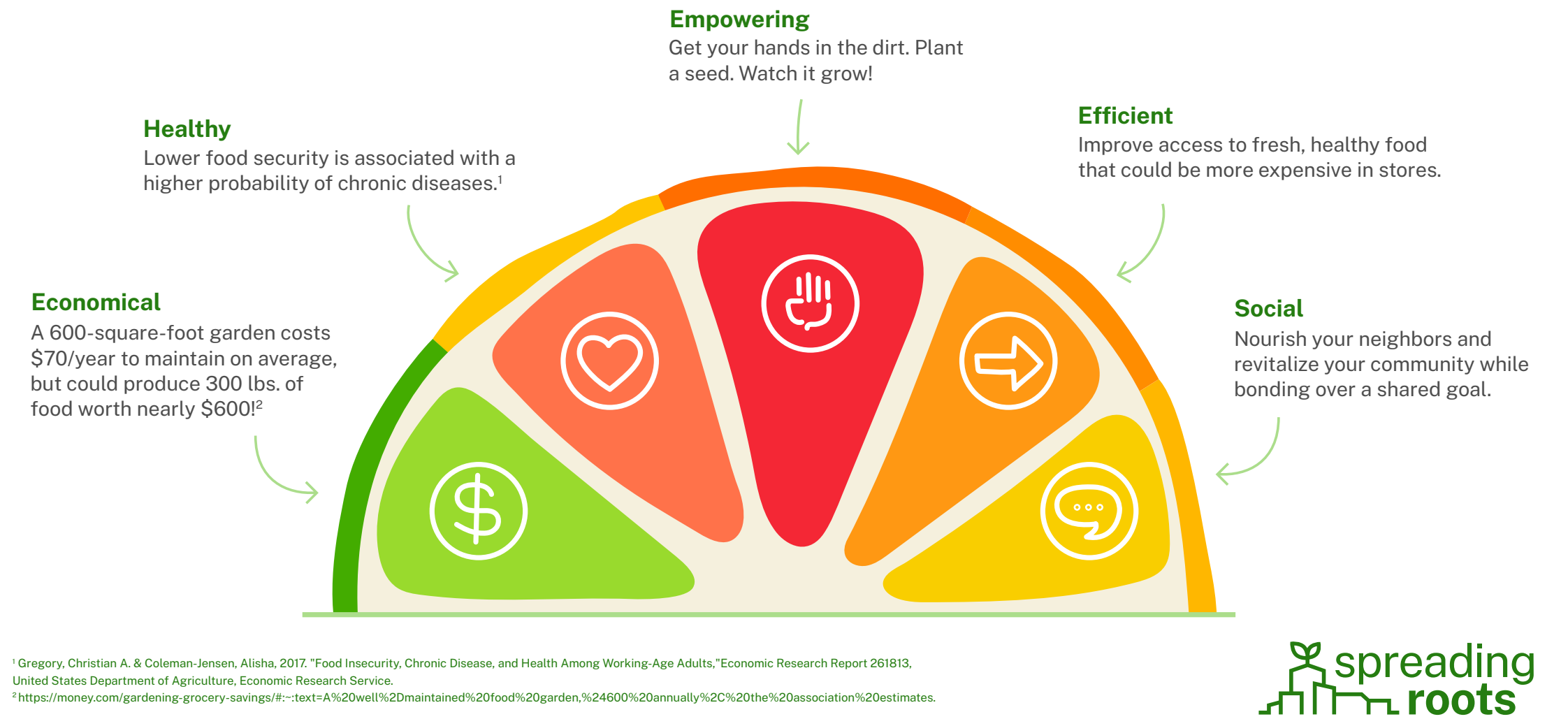


# Infographics

## Why Community Gardens Are A-Peeling



## Why Community Gardens Are A-Peeling



# Infographics

## Community Well-Being

Strong social connections have been linked to improved health and well-being.

**Family**  
Green spaces are associated with greater longevity in older people. They also provide places for parents and children to engage in outdoor activities and spend time together.

**Place-making and Time**  
Turning vacant spaces (lots etc.) into vibrant places that reflect a community's aesthetic and cultural values and strengths advance community centered revitalization.

**Safety and Peace**  
Neighborhoods with homes fronted with street trees experience lower crime rates.

**Connection and Civic Engagement**  
Communities where residents are immersed in trees and nature may be kinder and more compassionate.



## Environmental Benefits

Trees, green spaces, and nature provide crucial environmental benefits to urban areas.

**17.4M**  
Tons of Air Pollution Removed in the United States


Approximately  
**1.83B**  
Trees Planted Globally Each Year

**80%**  
Runoff Reduction Compared to Asphalt

About  
**45°F**  
Cooler Under Tree Coverage

**“Green spaces create wildlife corridors in cities essential for the survival of urban wildlife.”**

Green Canopy, Better World: Exploring the benefits of trees. (n.d.). Gardemia - Creating Gardens. <https://www.gardemia.net/guide/green-canopy-better-world-benefits-of-trees>



## Food Forests

Supporting ecosystems and connecting communities with nature.


Food forests are areas planted with many different edible plants of different heights and sizes. They are often arranged in patterns like natural forests with layers ranging from groundcover to tall trees. In addition to many annual plants typically grown in fruit and vegetable gardens that must be planted each year, food forests include perennial plants which do not have to be replanted year after year but will continue to grow for many years.

There are currently  
**85+**  
Food Forests in the United States

**Benefits**  
Food forests can provide healthy food to eat as well as places to gather and stay healthy in the shade.

**Starting and Upkeep**  
When choosing a site, consider whether it will be sunny or shady, and whether it will have water access.

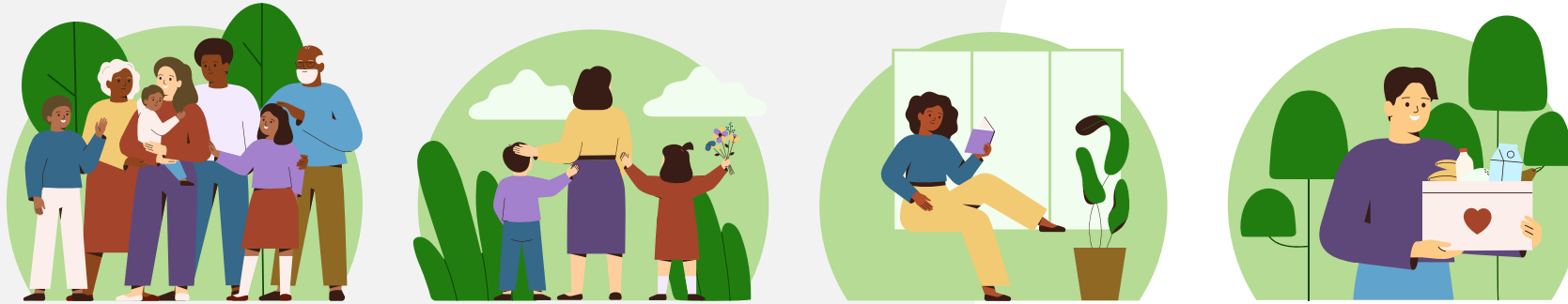
**Particular Plants**  
Location will affect which types of trees will grow best in your food forest.



# Infographics

## Community Well-Being

Strong social connections have been linked to improved health and well-being.



## Environmental Benefits

Trees, green spaces, and nature provide crucial environmental benefits to urban areas.



## Food Forests

Supporting ecosystems and connecting communities with nature.

Food forests are areas planted with many different edible plants of different heights and sizes. They are often arranged in patterns like natural forests with layers ranging from groundcover to tall trees. In addition to many annual plants typically grown in fruit and vegetable gardens that must be planted each year, food forests include perennial plants which do not have to be replanted year after year but will continue to grow for many years.

